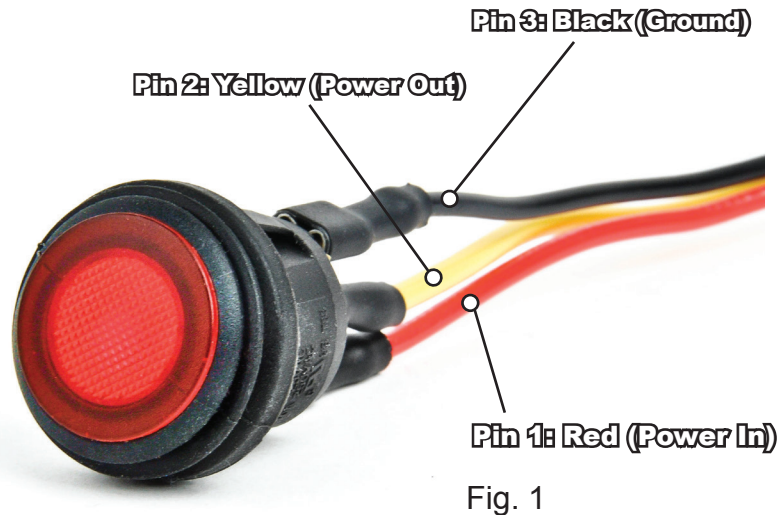


LIT ROCKER SWITCH INSTRUCTIONS

040-LS-02 / 040-LS-03

SWITCH AND HARNESS:



INSTALLATION:

STEP 1: Drill 13/16" hole in desired mounting location.

Note: Panel thickness should be 0.10 inches / 3mm or less (See figure 2)

STEP 2: Using a small file remove a small section from one side to allow for key on switch

STEP 3: Wire Ground (Pin 3/Black) directly to the negative terminal of the battery, or to any grounded location on the vehicle. (See figure 2)

STEP 4: Wire Power Out (Pin 2/Yellow) or accessory power directly to the positive side of accessory requiring power. (i.e. Lighting, heater, fan, etc) (See figure 1)

STEP 5: Wire Power in (Pin 1/Red) directly to 12 Volt DC Power (Battery or Fuse Block) (See figure 1)

Electrical Specs: 12 Volts DC @ 8 Amps

DRILL TEMPLATE:

Panel Thickness < 3mm

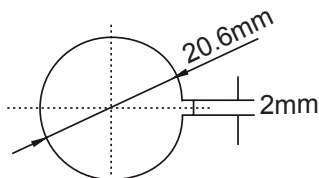


Fig. 2

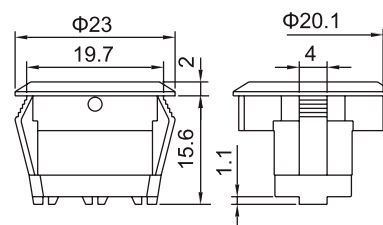


Fig. 3